



ISA NextGenMaterials

ISA, the Next-Gen Material Manufacturer, specialized in producing sustainable leathers and additional sustainable materials



ISA NextGenMaterials

Business Units



ISA TanTec

ISA TanTec™, manufactures LITE (Low Impact To the Environment) leather with our commitment to minimize negative environmental impacts

ISA COSM™

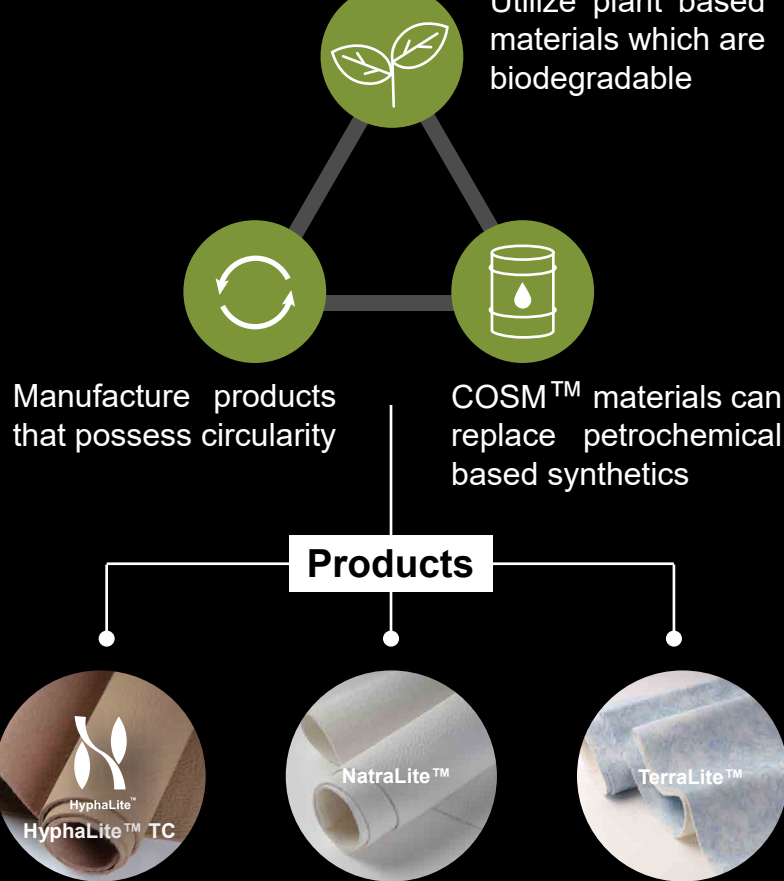
ISA COSM™ (Creation of Sustainable Materials), specialized in the development and production of additional sustainable materials

Divisions



COSM's additional sustainable materials are applied in different divisions

Utilize plant based materials which are biodegradable



All facilities are 100% owned by ISA



Higg / Worldly FSLM (Facility Social & Labor Module)

- Community Engagement
- Employee Treatment
- Wages & Benefits
- Health & Safety

Higg / Worldly MSI (Materials Sustainability Index)

- Materials Sustainability
- Life Cycle Assessment (LCA)
- Environmental Sustainability of Supply Chain

ISO9001

- Quality Management
- Quality Improvement
- Quality Assurance
- Quality Control

ISO14001

- Environmental Performance
- Sustainable Developments
- Environmental Objectives
- CSR Targets

Intercompany Pricing

- Legal Implementation
- Economic Reality
- Transparency
- Compliance
- Justice

Financial Audits

- Accountability
- Compliance
- Stability
- Reliability
- Accuracy

Higg / Worldly FEM (Facility Environmental Module)

- Energy & Greenhouse-Gas Emissions
- Environmental Management System
- Chemicals Management
- Air Emissions
- Wastewater
- Water Use
- Waste

LWG (Leather Working Group)

- Environmental Management System
- Restricted Substances
- Air & Noise Emissions
- Energy Consumption
- Waste Management
- Effluent Treatment
- Water Usage

ECO2L (Energy Controlled Leather)

- Waste & Wastewater Management
- Chemical Management
- Energy Consumption
- Carbon Footprints

RSL (Restricted Substances List)

- Restriction of Hazardous Substances
- Protection of Environment
- Protection of Health
- Risk Mitigation
- Compliance with Tannery Reformulation Protocol (CA / Proposition 65 settlement on Cr VI)

CSR (Corporation Social Responsibility)

- Support to Ethically-Oriented Practices
- Social and Environmental Concerns
- Giving Back to the Community
- Improvement of Wellbeing
- Positive Social Value

* Examples of audits that have been completed for all brands

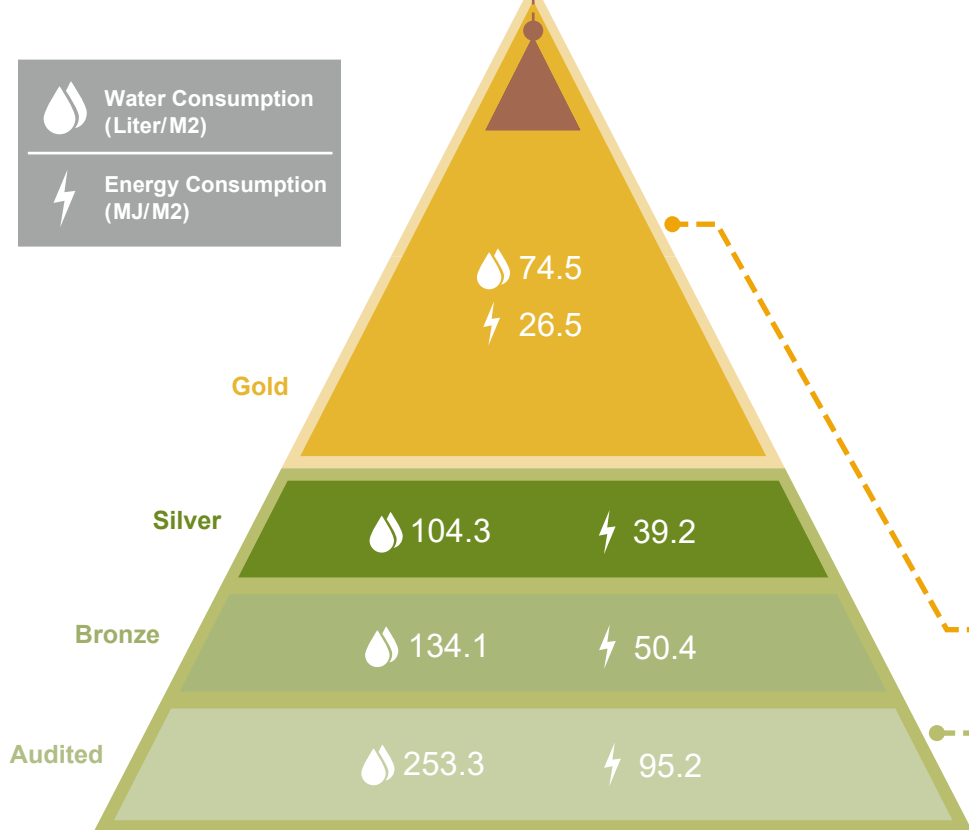
LWG Environmental Audit Protocol

ISA TanTec **49.03** **23.37**

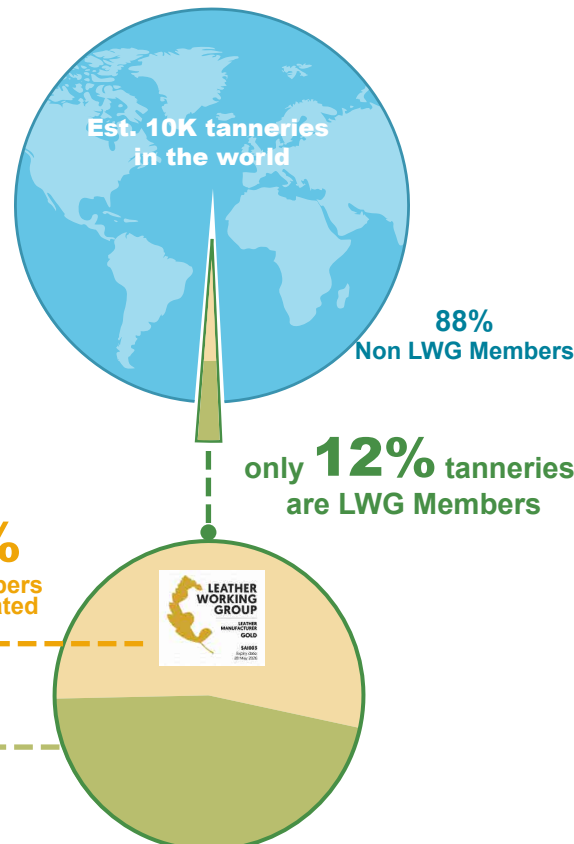
ISA TanTec outperforms the Gold Rated score benchmark

Water Consumption (Liter/M2)

Energy Consumption (MJ/M2)



The LITE (Low Impact To the Environment) concept has been developed to ensure our manufacturing process is operated sustainably, saving energy and water while minimizing chemical use. It has made ISA TanTec an LWG Gold-Rated leather manufacturer and consistently outperforms the gold rated score benchmark set by LWG in energy and water saving. Using the audited calculation method, LITE provides customers with carbon, water and energy usage for each of our leather creations.



*Source from latest Leather Working Group protocol

*Data as of 2024



ISA NextGenMaterials

ISA TANTEC LTD.

Avenida Da Praia Grande N. 619 Comercial Si Toi, 5 Andar 8, Macau, P. R. China

+853 2835 6320

info@tantec1.com

www.isanextgenmaterials.com



LITE